


Design Guidelines: Window distances and wall plane




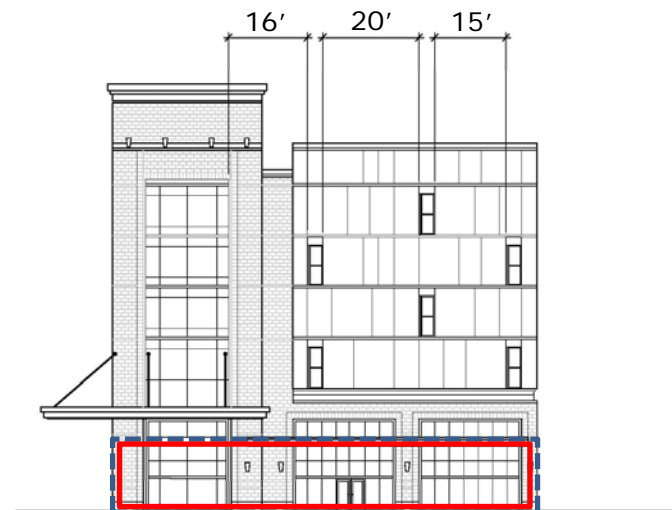
Maximum unfenestrated length analysis

Max. distance = 35' (only one occurrence)

Ground Floor Wall Plane analysis

 Ground floor area =
4830 sf total

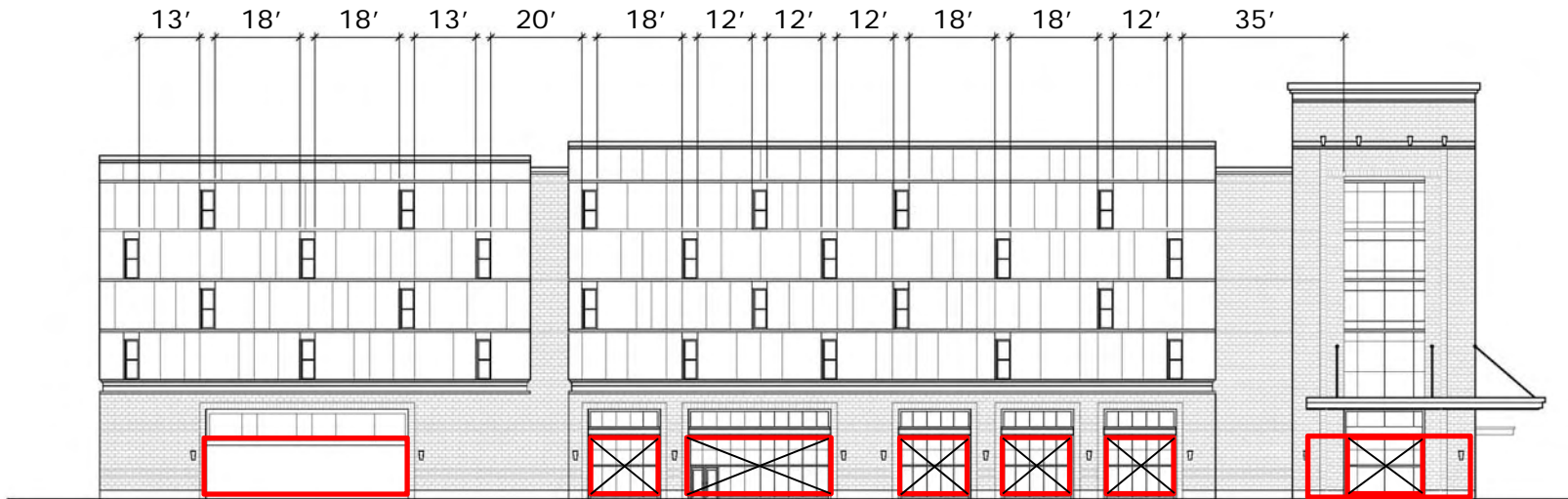
 Area of windows, canopies,
entries, or other features =
3615 sf total
 $3615\text{sf}/4830\text{sf} = 75\%$





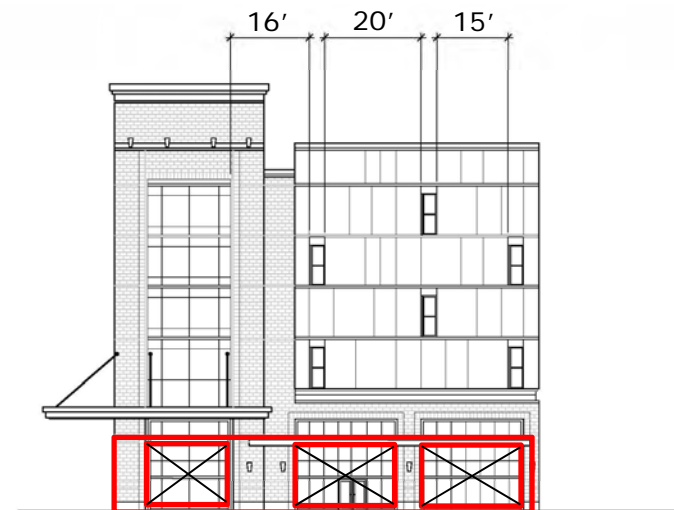
50 Middlesex Avenue

SSG Development | BL Companies | Goody Clancy

Design Guidelines: Ground Floor Transparency



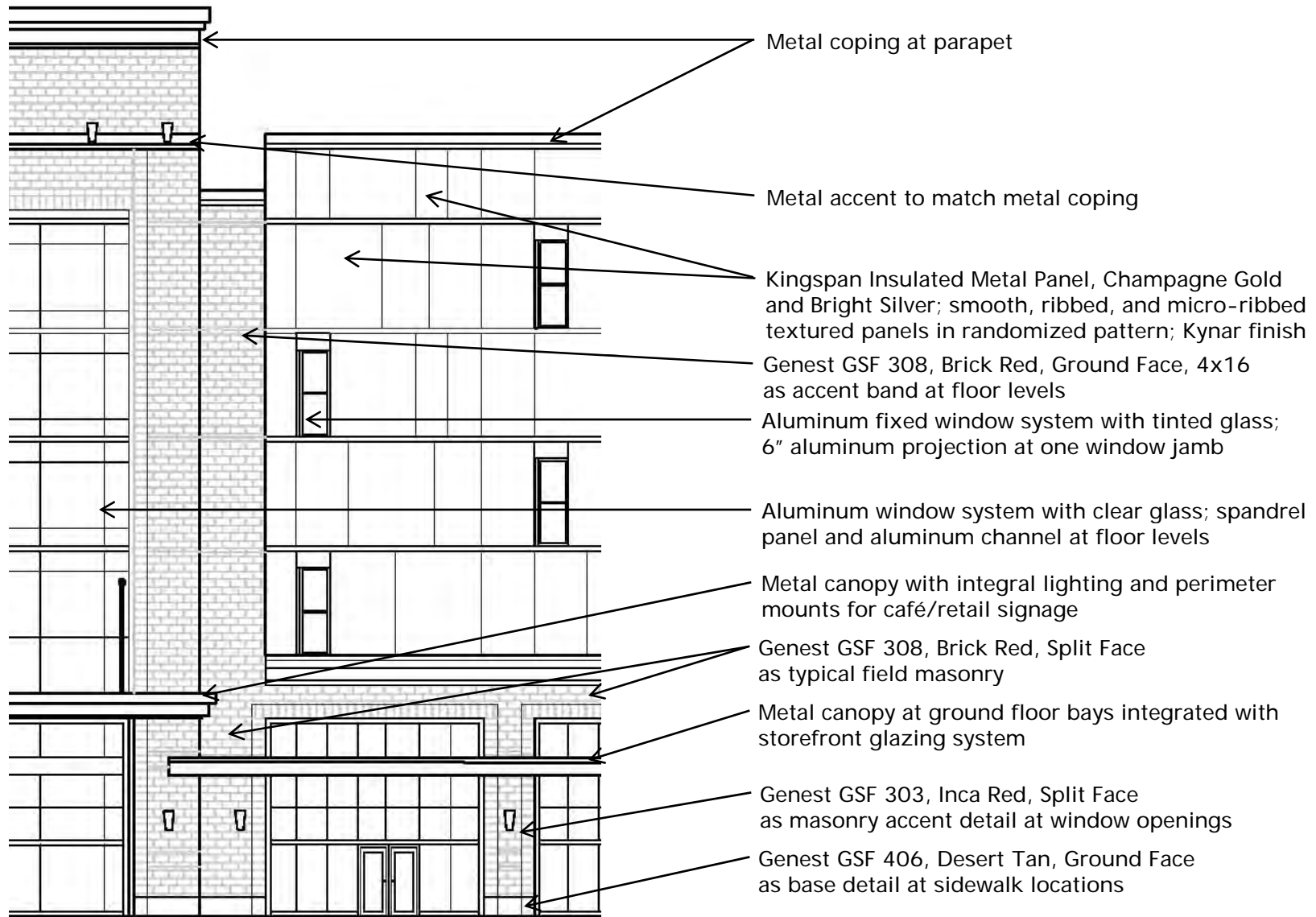
Ground Floor Transparency analysis	
	Area of windows, canopies, entries, or other features = 3615 sf total
	Transparent area = 2430 sf total
$2430\text{sf}/3615\text{sf} = 67\%$	



50 Middlesex Avenue

SSG Development | BL Companies | Goody Clancy

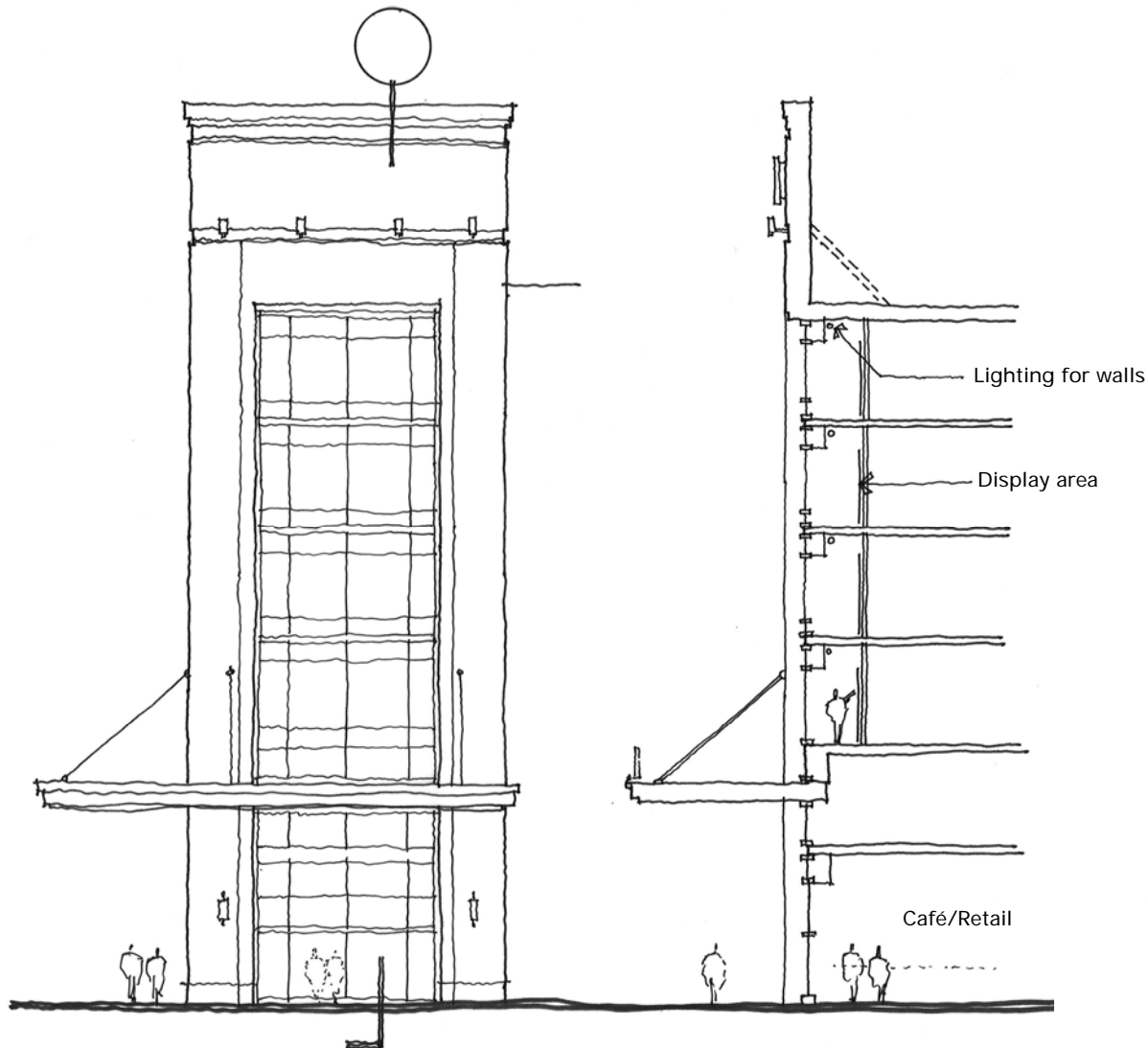
Design Guidelines: Typical Façade Materials



50 Middlesex Avenue

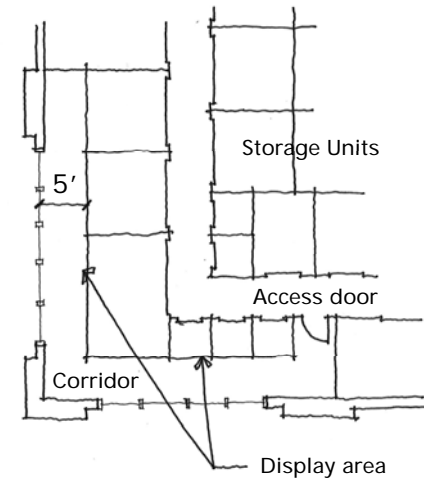
SSG Development | BL Companies | Goody Clancy

Design Guidelines: Tower Display Area



Partial Elevation

Section at Tower



Plan at Tower

Note:
Other alternatives for tower display area include screened graphics applied to interior face of glass wall, projection of images on walls which could change over time, permanent super-graphic installations, and 3D sculpture placed within the corridor space.